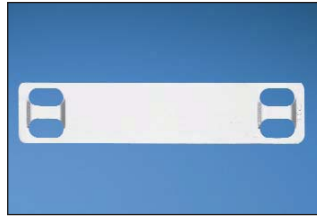


Stainless Steel and Brass Marker Plates and Tags

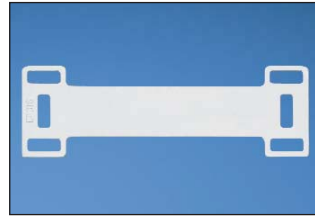
- Provides permanent identification of pipes, conduit, valves, cables and equipment in harsh environments
- Designed for use with Panduit® Pan-Steel® Stainless Steel Cable Ties for fast installation at lowest installed cost
- All marker plates/tags can be embossed or laser etched with Panduit Factory Custom Marking Service
- For on-site custom marking see page E4.6
- Designated plates feature easy feed design with a raised slot to simplify cable tie installation and improve productivity



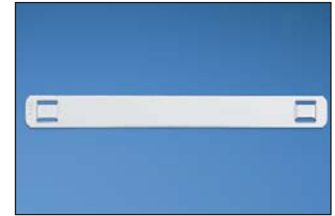
MMP350-C



MMP350H-C



MMP350DB-C



MMP350W38-C



MMP172-C



MMP172W38-C



MMP350W17-Q

| Part Number | Material | Color | Length/ Diameter | | Width | | Custom Marking Parameters* | | Used with Pan-Steel® Cable Ties** | Thickness | | Std. Pkg. Qty. | Std. Ctn. Qty. |
|------------------------|---------------------|---------|---------------------|---------------------|---------|------|---|-----------------------|---|-----------|------|----------------------|----------------------|
| | | | In. | mm | In. | mm | Max. 3/16" (4.77mm) Character Per Line | Max. Lines of Text | | In. | mm | | |
| | | | MMP350-C‡ | 304 Stainless Steel | Natural | 3.50 | 89.0 | 0.75 | | 19.0 | 23 | | |
| MMP350-C316‡ | 316 Stainless Steel | Natural | 3.50 | 89.0 | 0.75 | 19.0 | 23 | 3 | MLT-S | 0.010 | 0.25 | 100 | 1000 |
| MMP350H-C‡ | 304 Stainless Steel | Natural | 3.50 | 89.0 | 0.75 | 19.0 | 20 | 3 | MLT-H | 0.010 | 0.25 | 100 | 1000 |
| MMP350H-C316‡ | 316 Stainless Steel | Natural | 3.50 | 89.0 | 0.75 | 19.0 | 20 | 3 | MLT-H | 0.010 | 0.25 | 100 | 1000 |
| MMP350DB-C‡ | 304 Stainless Steel | Natural | 3.50 | 89.0 | 1.12 | 29.0 | 20 | 3 | MLT-H | 0.015 | 0.38 | 100 | 1000 |
| MMP350DB-C316‡ | 316 Stainless Steel | Natural | 3.50 | 89.0 | 1.12 | 29.0 | 20 | 3 | MLT-H | 0.015 | 0.38 | 100 | 1000 |
| MMP350W38-C‡ | 304 Stainless Steel | Natural | 3.50 | 89.0 | 0.38 | 10.0 | 23 | 1 | MLT-S | 0.010 | 0.25 | 100 | 1000 |
| MMP350W38-C316‡ | 316 Stainless Steel | Natural | 3.50 | 89.0 | 0.38 | 10.0 | 23 | 1 | MLT-S | 0.010 | 0.25 | 100 | 1000 |
| MMP172-C‡ | 304 Stainless Steel | Natural | 1.72 | 44.0 | 0.75 | 19.0 | 8 | 3 | MLT-S | 0.010 | 0.25 | 100 | 1000 |
| MMP172-C316‡ | 316 Stainless Steel | Natural | 1.72 | 44.0 | 0.75 | 19.0 | 8 | 3 | MLT-S | 0.010 | 0.25 | 100 | 1000 |
| MMP172W38-C‡ | 304 Stainless Steel | Natural | 1.72 | 44.0 | 0.38 | 10.0 | 8 | 1 | MLT-S | 0.010 | 0.25 | 100 | 1000 |
| MMP172W38-C316‡ | 316 Stainless Steel | Natural | 1.72 | 44.0 | 0.38 | 10.0 | 8 | 1 | MLT-S | 0.010 | 0.25 | 100 | 1000 |
| MMP350W17-Q | 304 Stainless Steel | Natural | 3.50 | 89.0 | 1.73 | 44.0 | 23 | 6 | MLT-S | 0.015 | 0.38 | 25 | 250 |

*See page E4.2 for Panduit Factory Custom Marking Service information.

**See pages B3.5 – B3.7 for Pan-Steel® Stainless Steel Cable Ties.

‡Easy feed marker plate with raised cable tie slot.

Table continues on page E4.4

A.
System
Overview

B1.
Cable Ties

B2.
Cable
Accessories

B3.
Stainless
Steel Ties

C1.
Wiring
Duct

C2.
Surface
Raceway

C3.
Abrasion
Protection

C4.
Cable
Management

D1.
Terminals

D2.
Power
Connectors

D3.
Grounding
Connectors

E1.
Labeling
Systems

E2.
Labels

E3.
Pre-Printed
& Write-On
Markers

E4.
Permanent
Identification

E5.
Lockout/
Tagout/
& Safety
Solutions

F.
Index